

### TFT-50/70 LCD Monitor Lift

#### Features

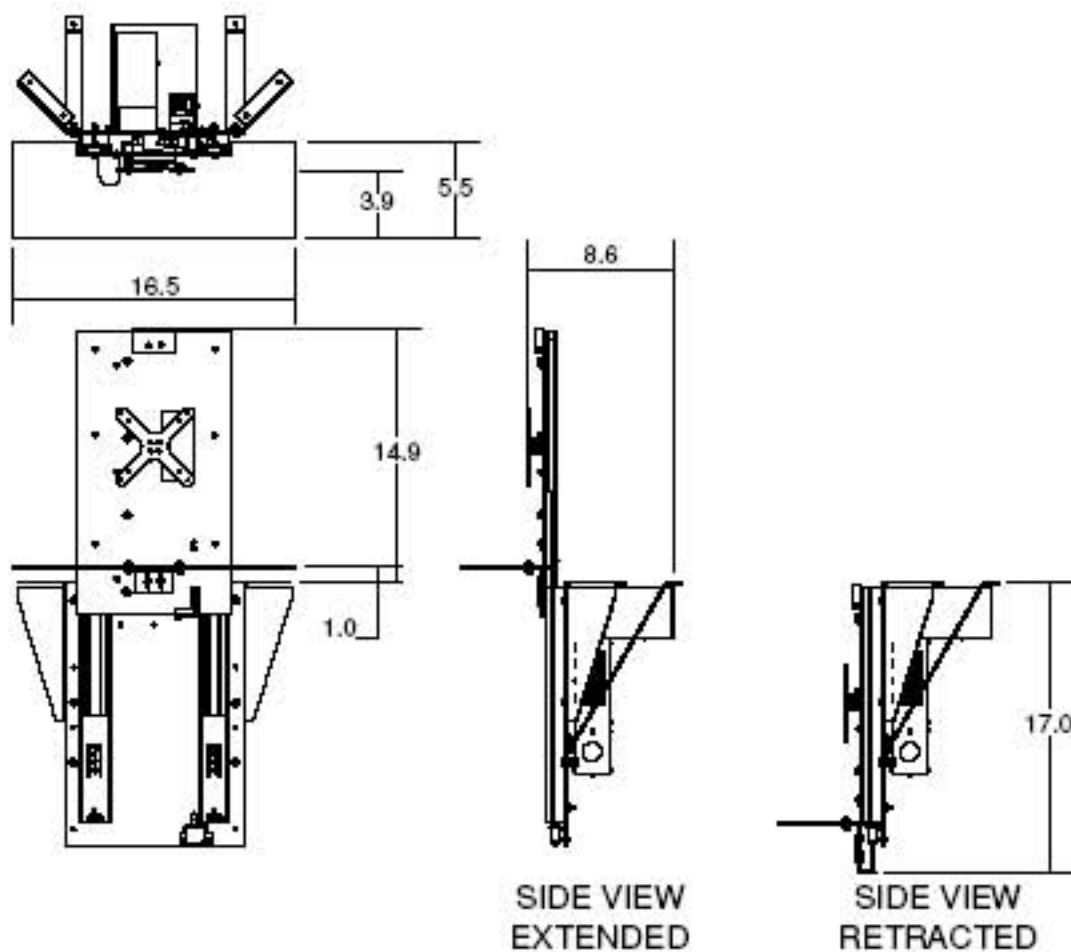
- Two popular configurations:
  - Raise up from within furniture
  - Lower down from ceiling or cabinet
- Travel distances - 14" and 16"
- Two positions: stowed and show
- For LCD/Flat Panel monitors or cameras (16" vertical or less)
- Unit mounts to underside of furniture leaving clear "knee space" for optimum viewing
- Quiet operation
- Includes wired hand-held remote and spill guard
- Optional protective lower housing and camera shelves available



Shown with monitor and cabinet

#### Dimensions *(Does not include monitor)*

TFT-50 16.5"w x 8.6"d x 17.0"h 18 lbs.



Metric conversion: inches x 25.4

#### Specifications

- Maximum flat panel size: 16" h
- Weight capacity: 25 lbs.
- Controlled via contact closure
- Spill guard can be sized to cabinet opening
- Power requirements: 110V, 1 amp / 220V .5 amp
- Digital electronics with self diagnostics
- Includes VESA standard 75/100mm tilt mount
- Shipping weight: 20 lbs.
- 1 year warranty